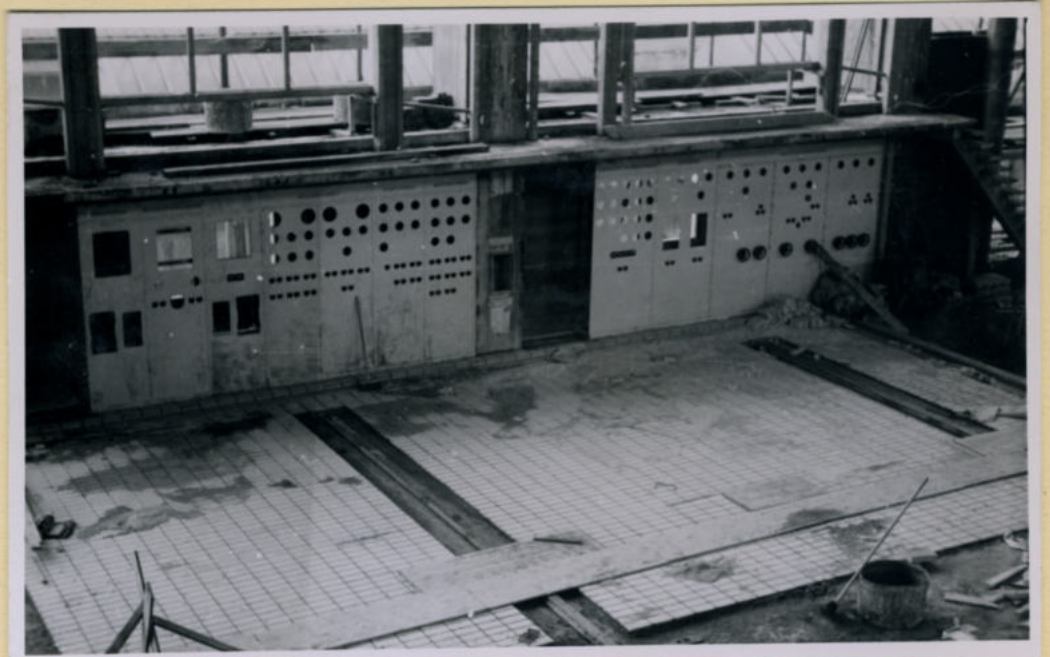


Overzicht natpartij PM11.

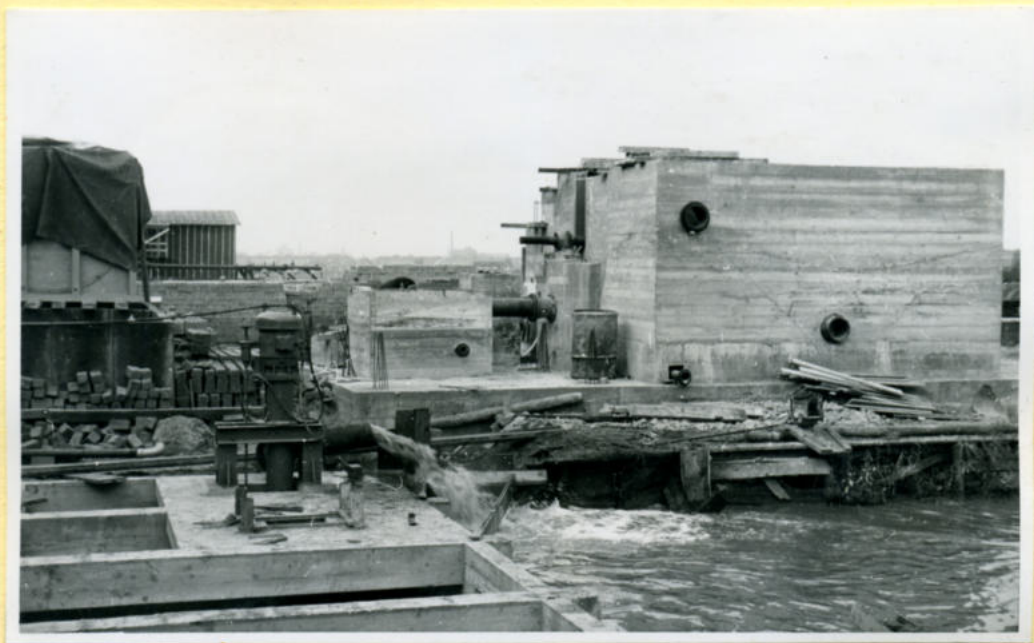
277



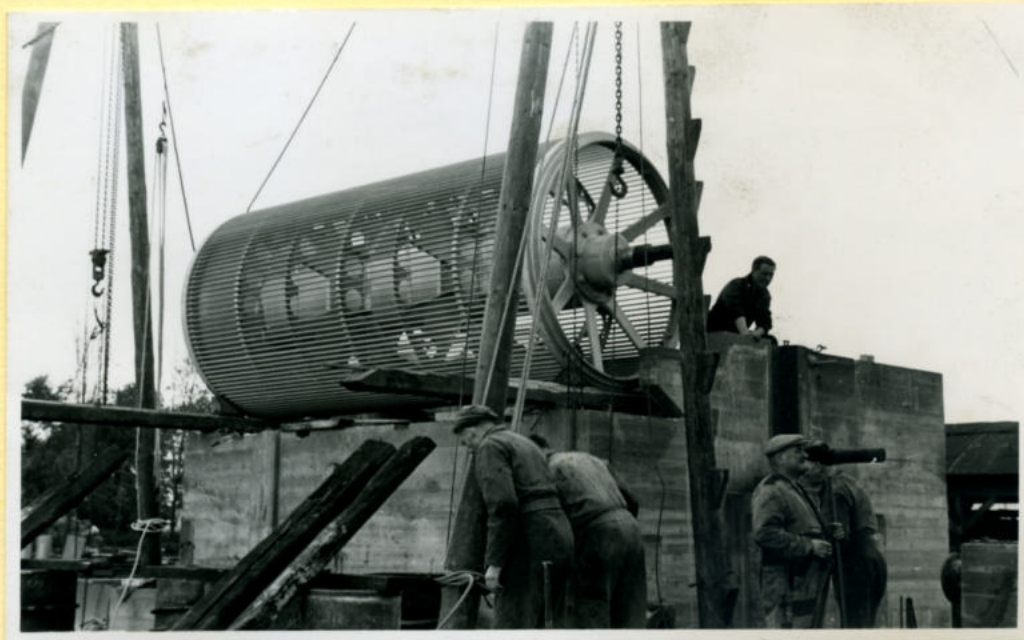
Schakelbord PM11.
Köör tegelvloer in aanbouw.



Wacofilter. Hoofduitlaat monteren.

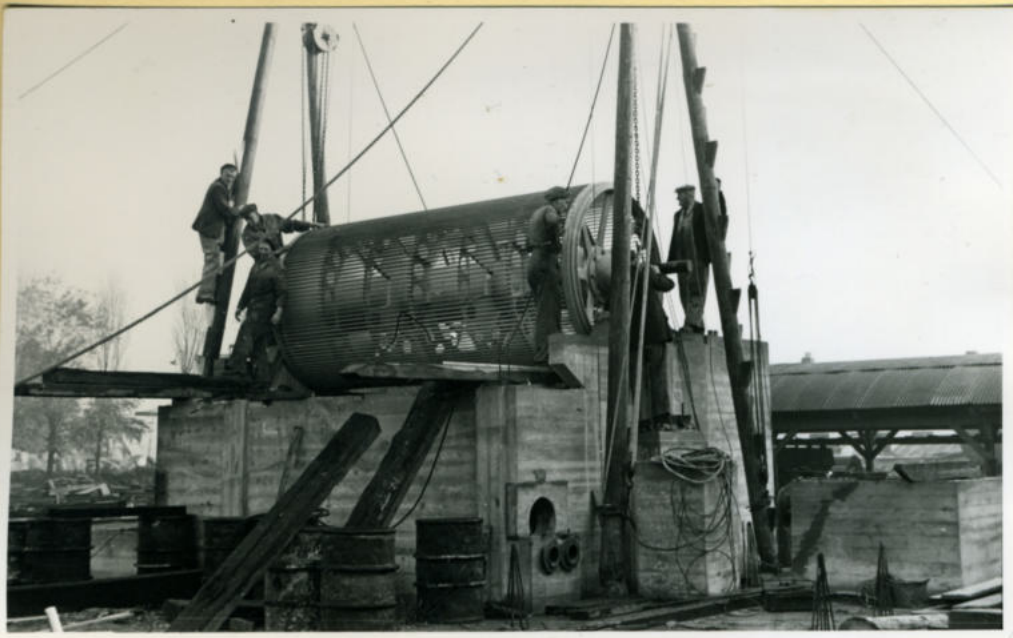


Wacofilter. De pomp reeds in werking.



Wacofilter. Montages.

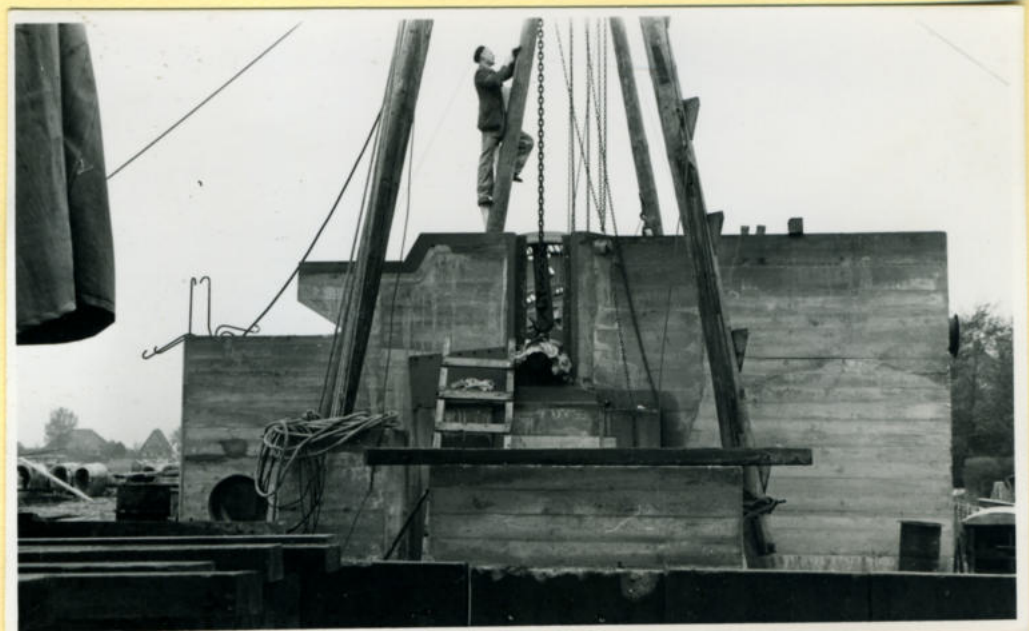
MB12
ZANSTREEK



Waco filter. Montage.



Waco filter. Montage.

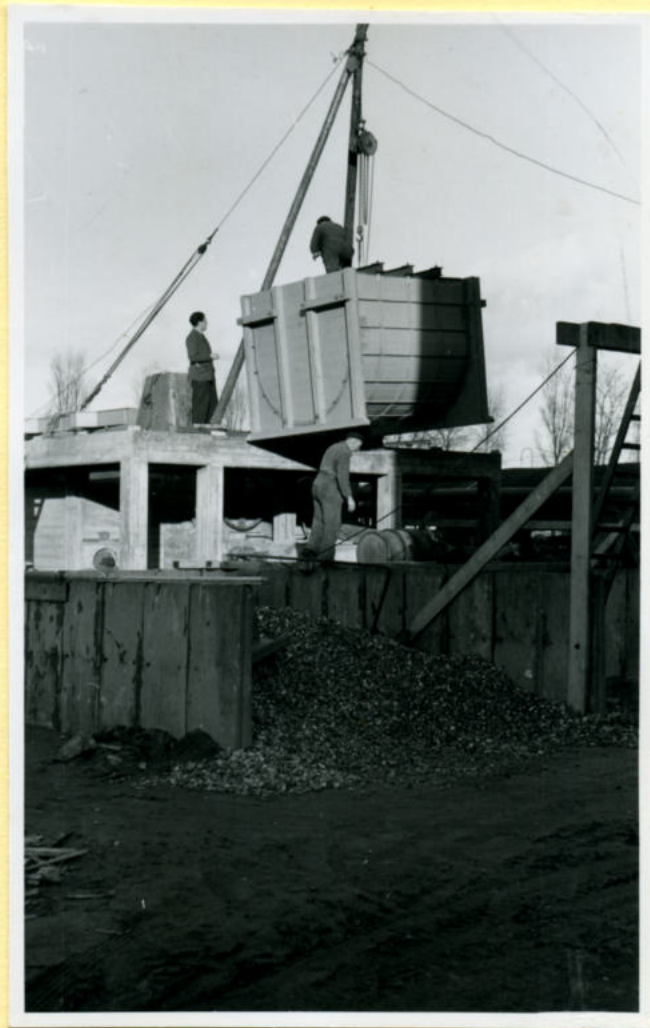


Waco filter. Montage.

SVVNSLBEKK
MPLS



Wacofilter. Het plaatsen van de oplosbak.



Wacofilter. Het plaatsen van de oplosbak.



Wacofilter.



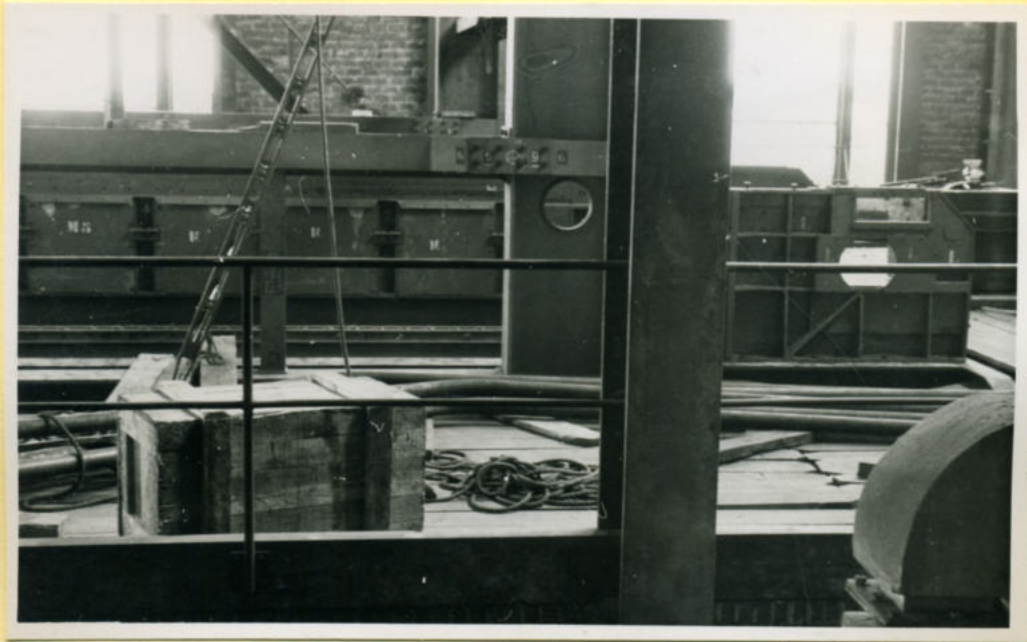
Wacofilter. (Rechts aanremer Stam).



Ketel 8. montage.



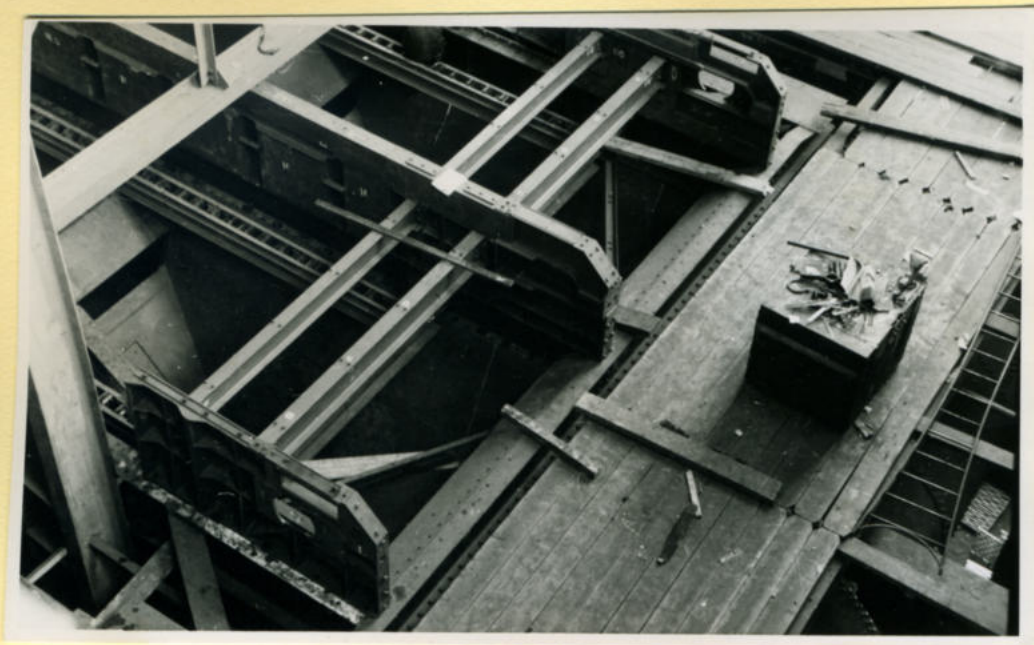
Ketel 0. Montage.



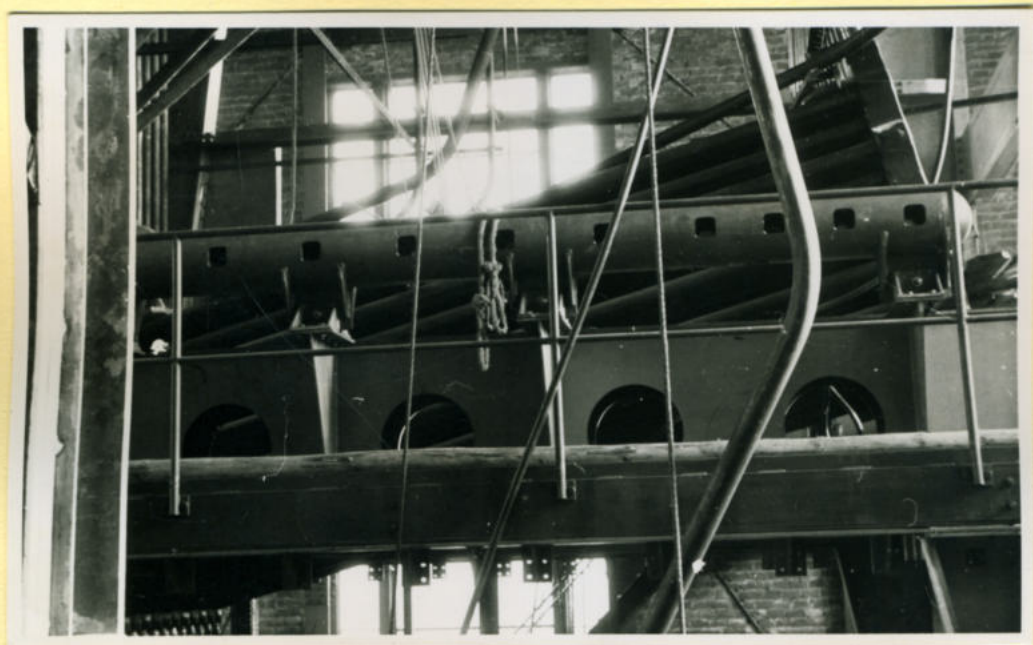
Ketel 0. Montage rooster.



Ketel 0. Montage rooster.



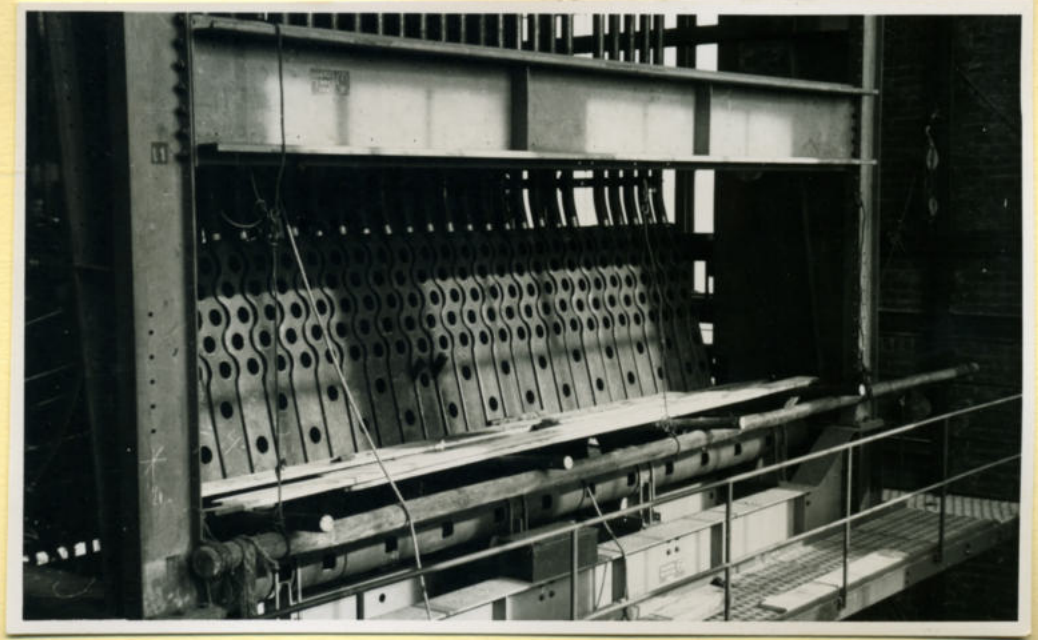
Ketel P. Bovenaanricht rooster.



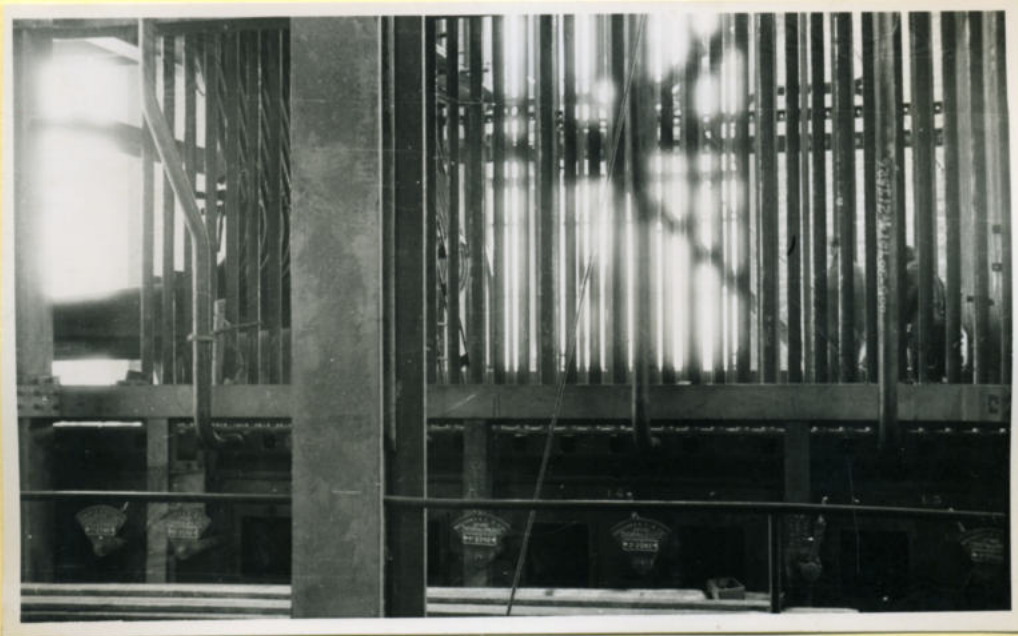
Ketel P. montage.



Ketel P. montage pijpen.



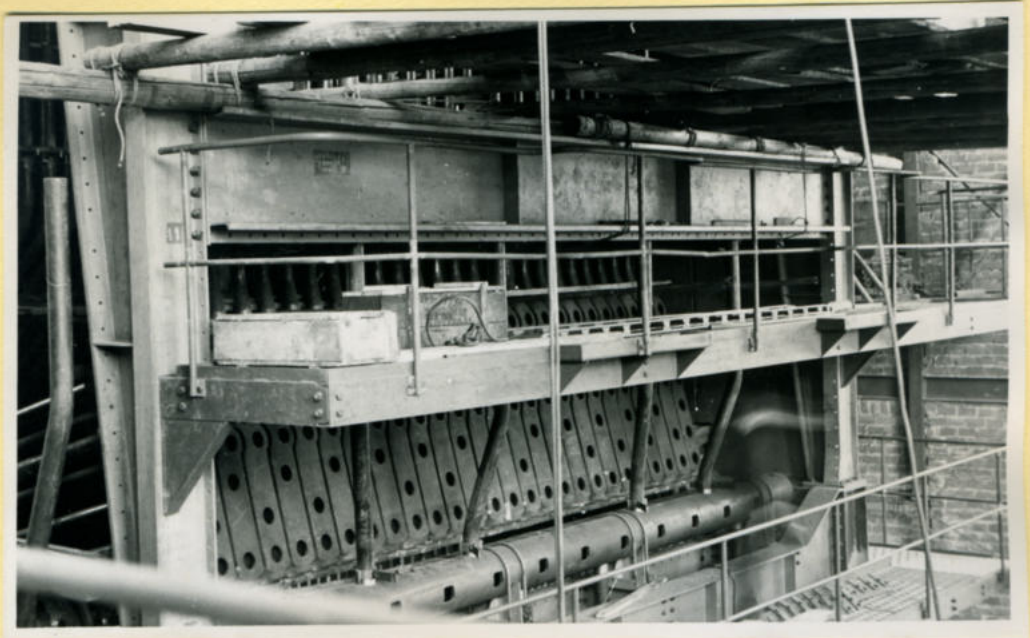
Ketel O. montage.



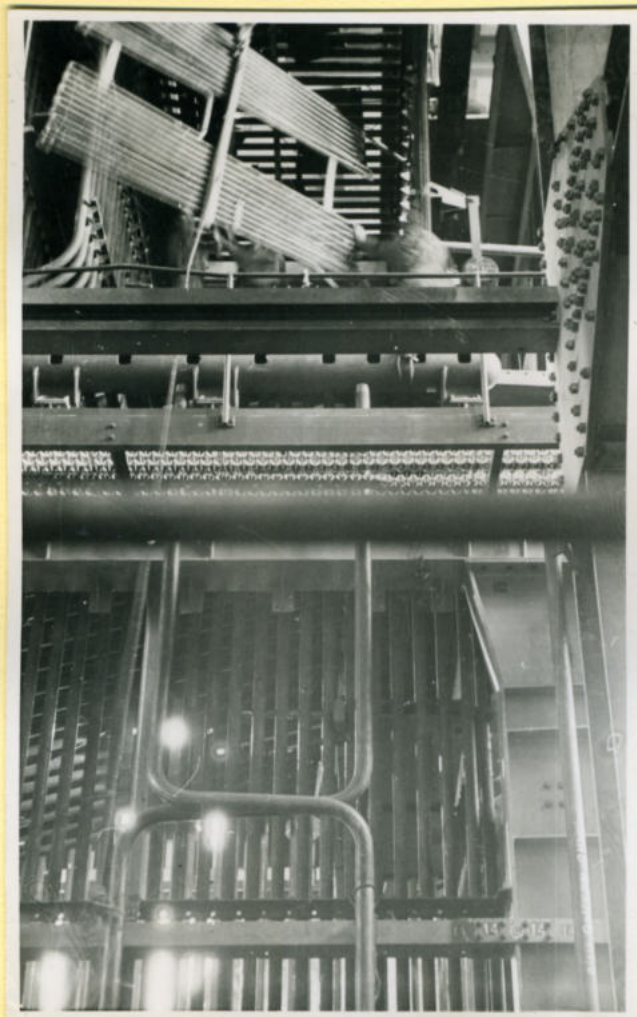
Ketel O. Klampijpen.



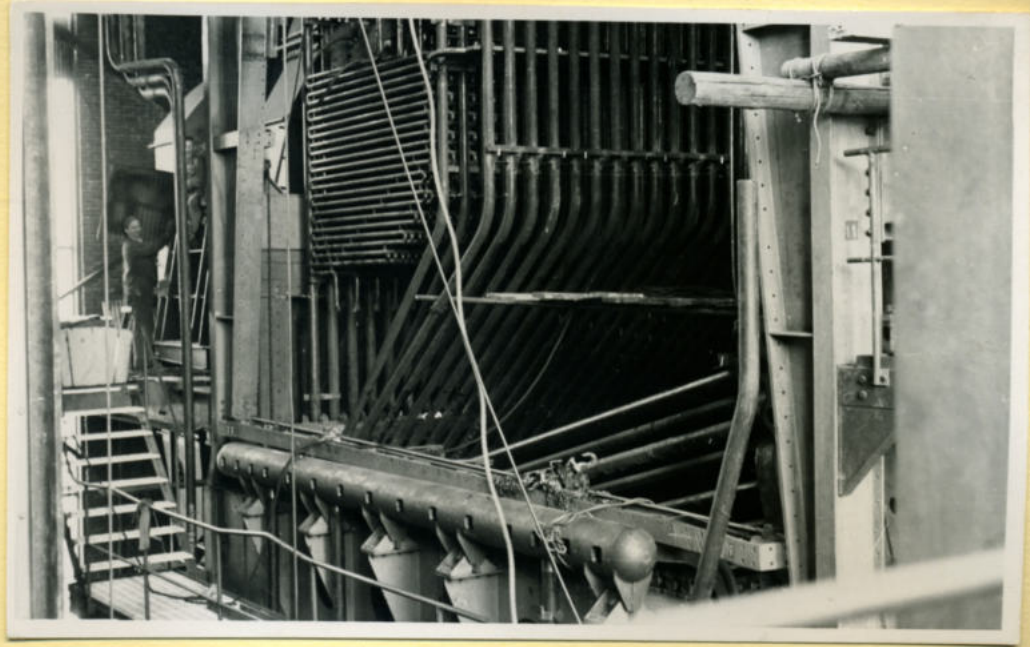
Ketel O. Voorkant rooster.



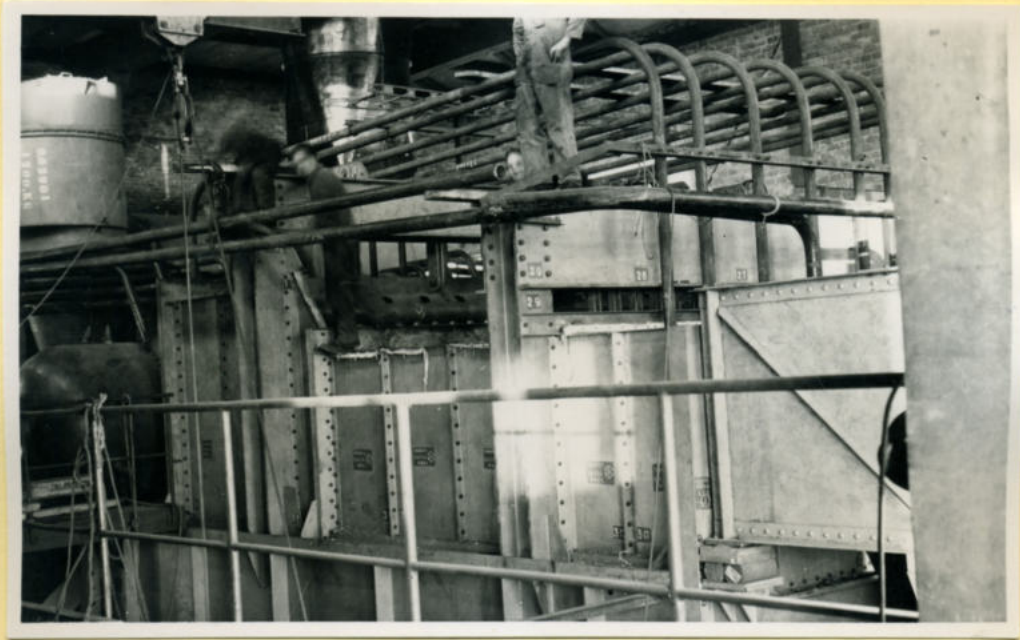
Ketel 8.



Ketel 8.



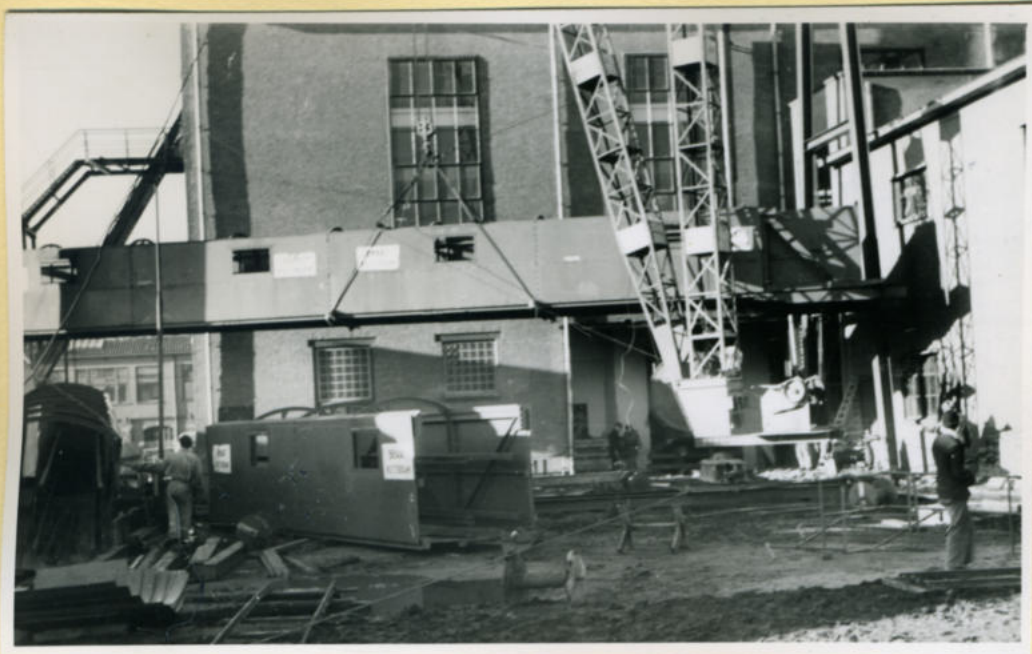
Ketel 8.



Ketel 8.



Bunhergebouwotje kolentransport Ketel 8.



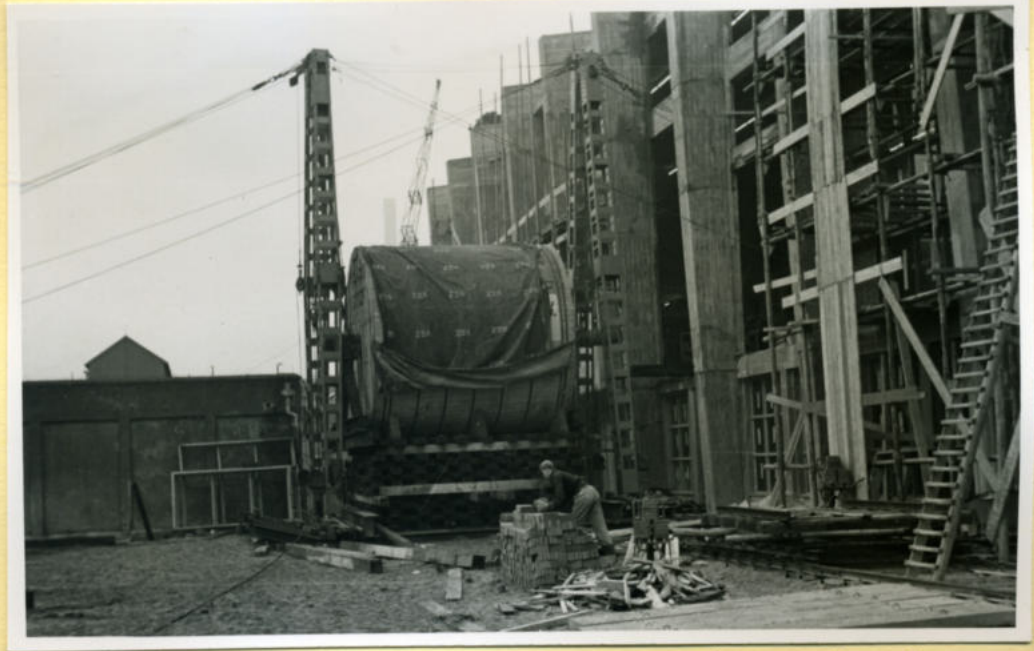
Kolentransport Ketel 8. Tunnel gaat omhoog.



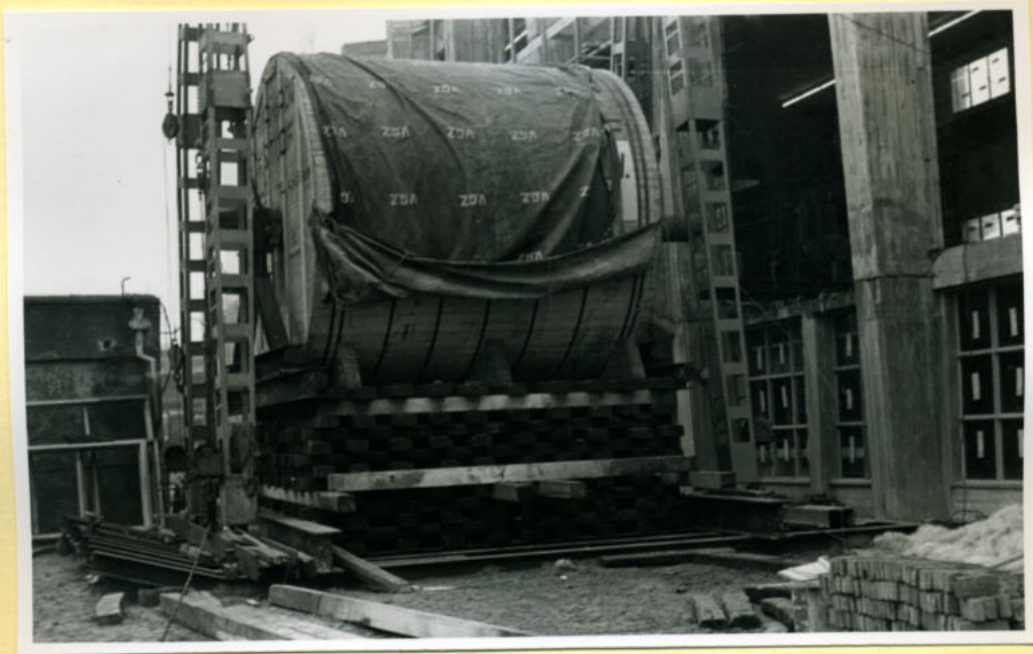
Kolentransport Ketel 8. Tunnel gaat omhoog.



Kolentransport Ketel 8. Montage van de tunnel.



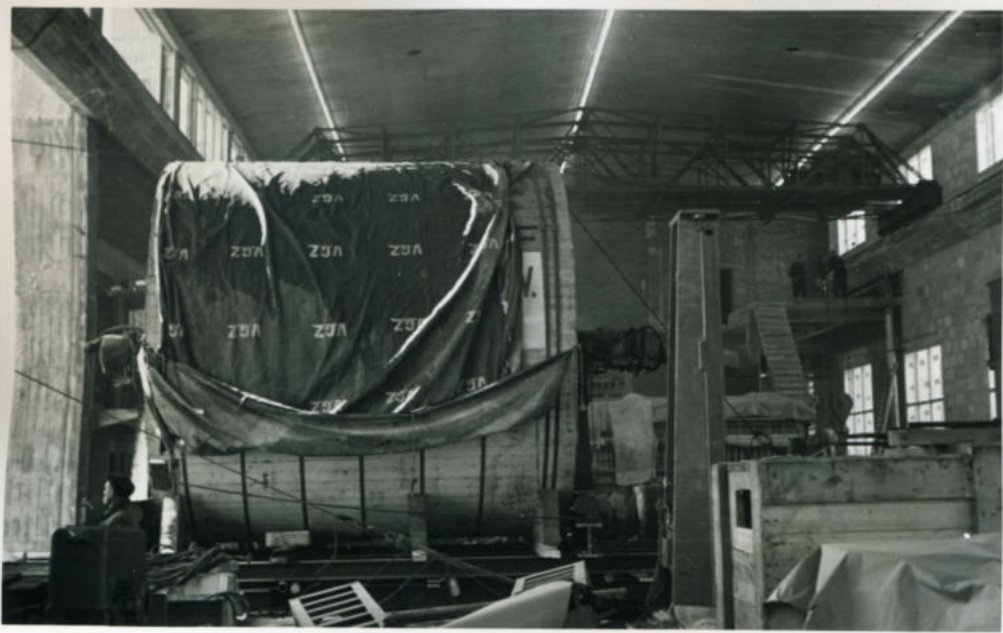
Glanecylinder PM 11 wordt omhoog gebracht.



Glanecylinder wordt omhoog gebracht.



De eijlinder is in het gebouw.



De Gelaansijlinder wordt op zijn plaats gehooven.

*In 't midden
keet Wernink's
Beton knij-
en materiaal
fa Stoop.*



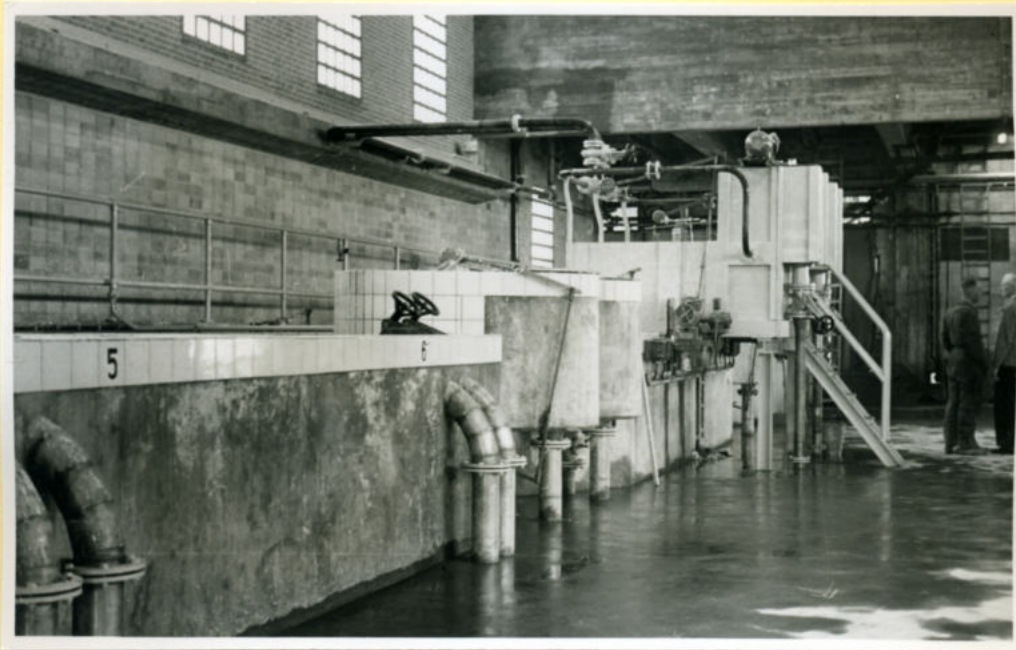
Uitzicht uit PM 11 gebouw, Op de achtergrond Wormer.

*Bouw van de tunnel
tussen grondstoffenmag-
en malerij PM 11.*



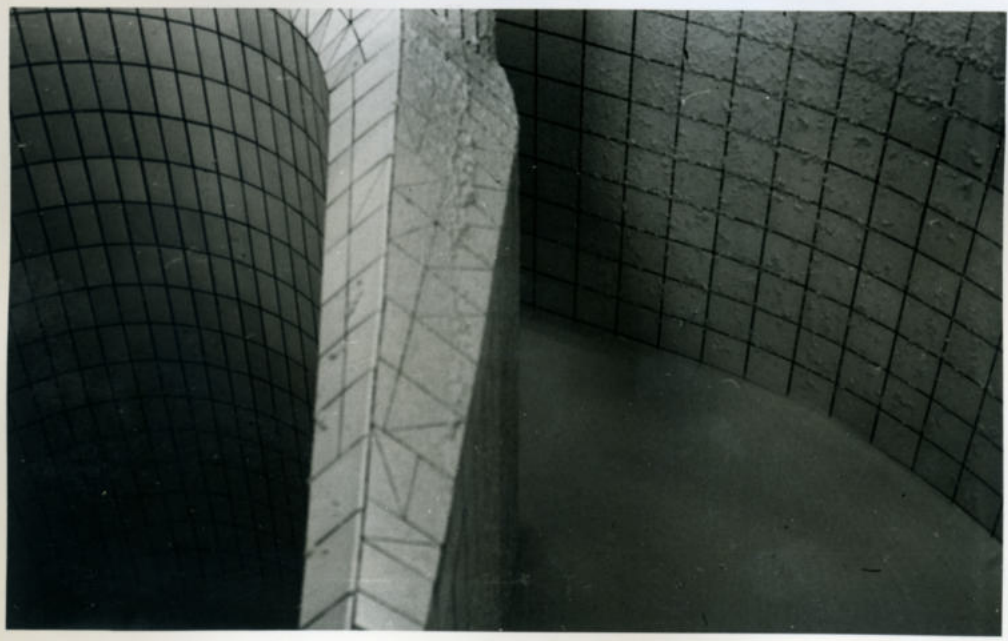


Malerij PM11. De balenbrekers worden gevuld.

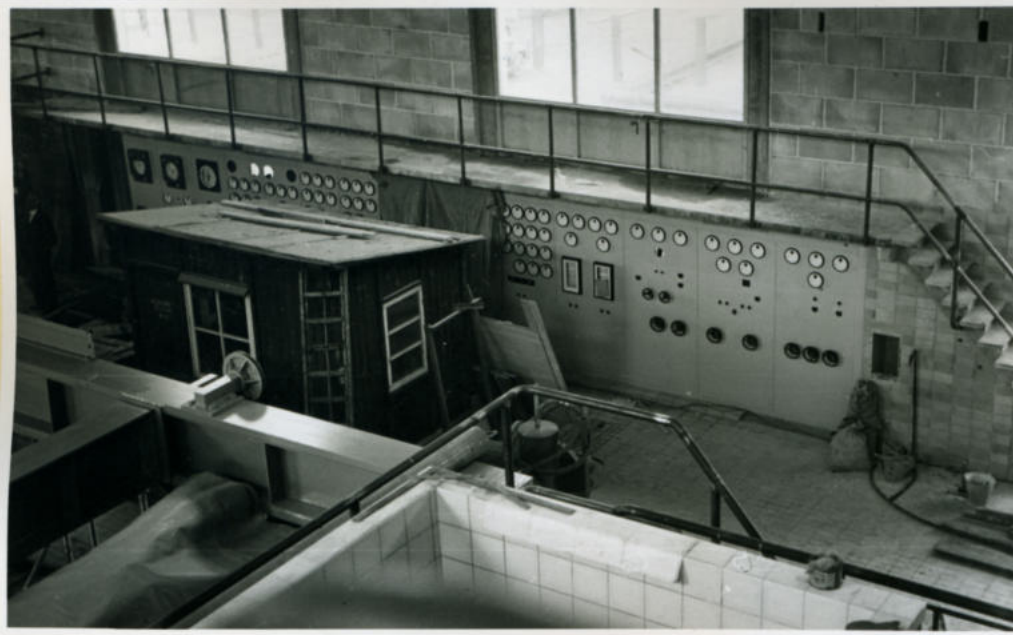


(G geheel rechts
Werkbaas
Roxemeijer)

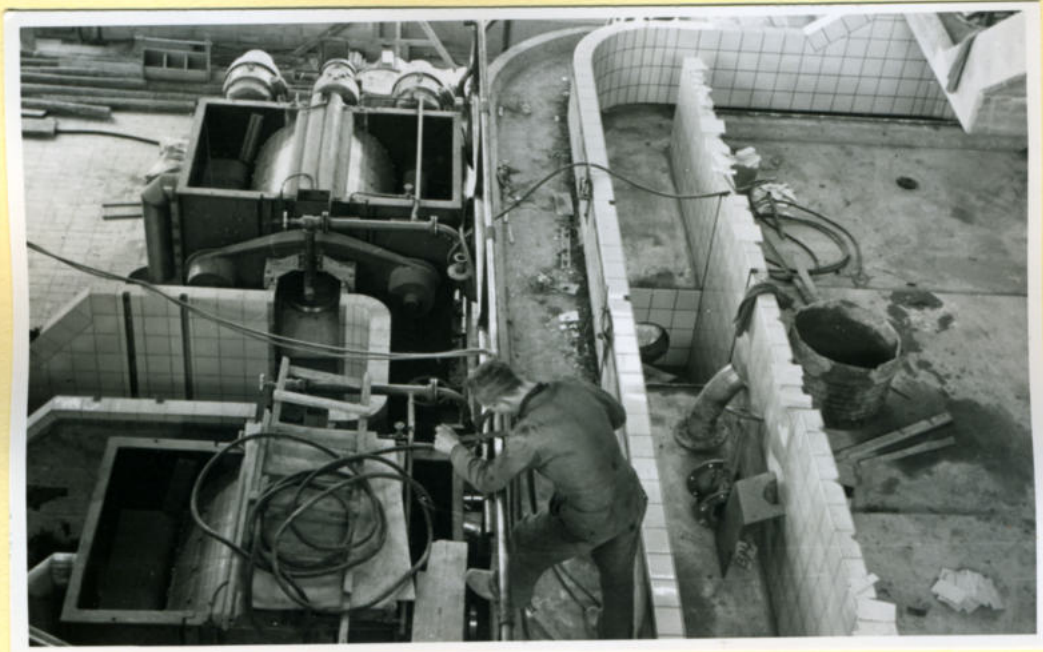
Malerij PM11. Stofkuisen met consistentie regelaars.



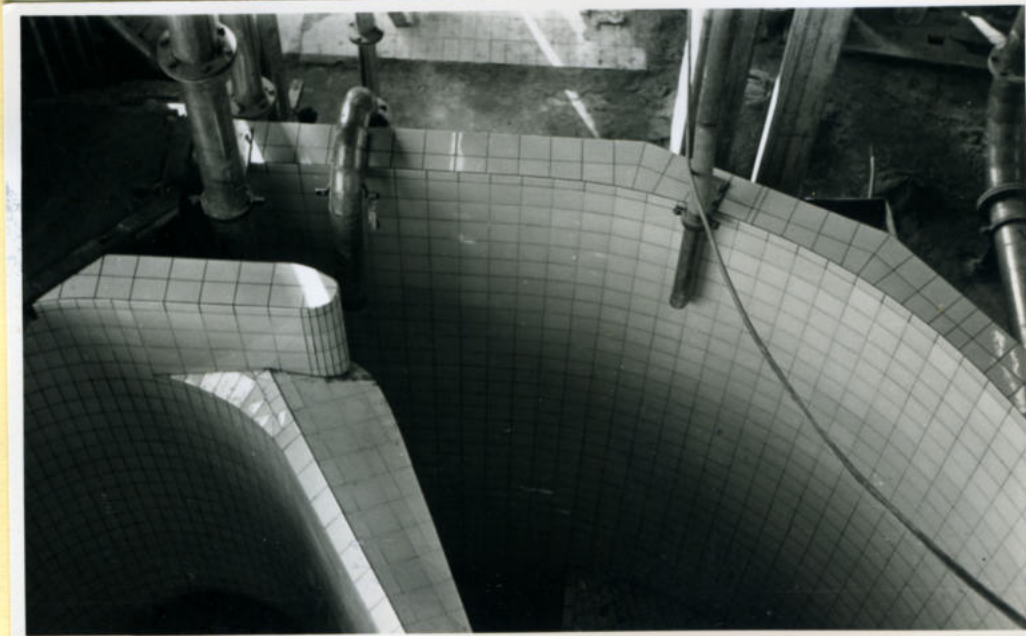
Malerij PM11. Stof in stofkuis.



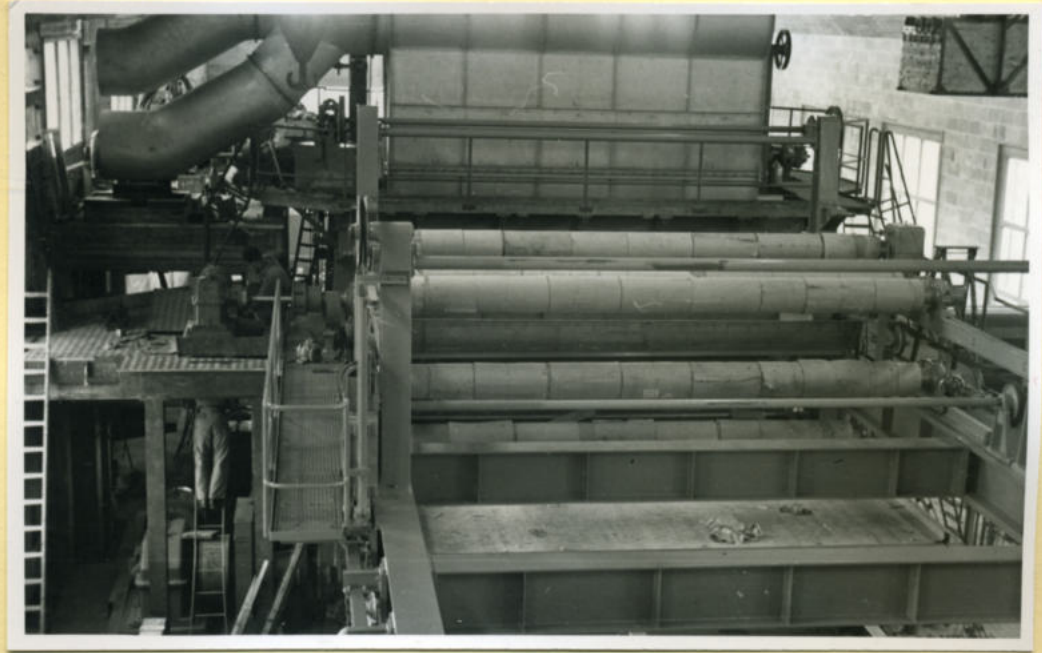
Schakelpaneel PM11, (met keet fa Voith).



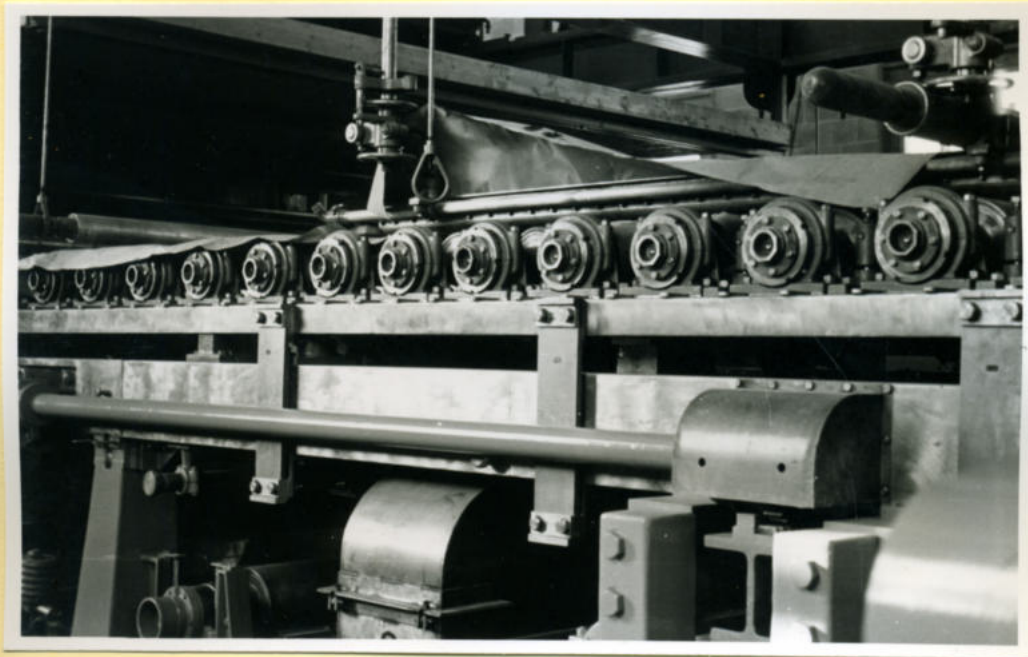
Betegeling zandwanger PM11 en montage Ekströmreven.



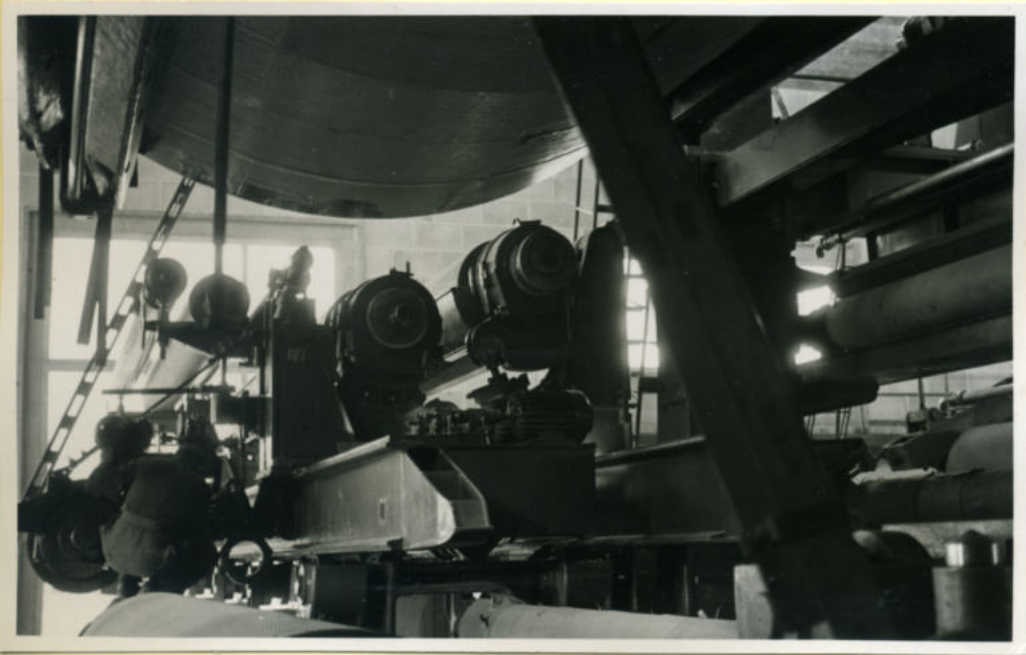
Stofput PM11.



Bovenaanzicht van achterkant PM II.

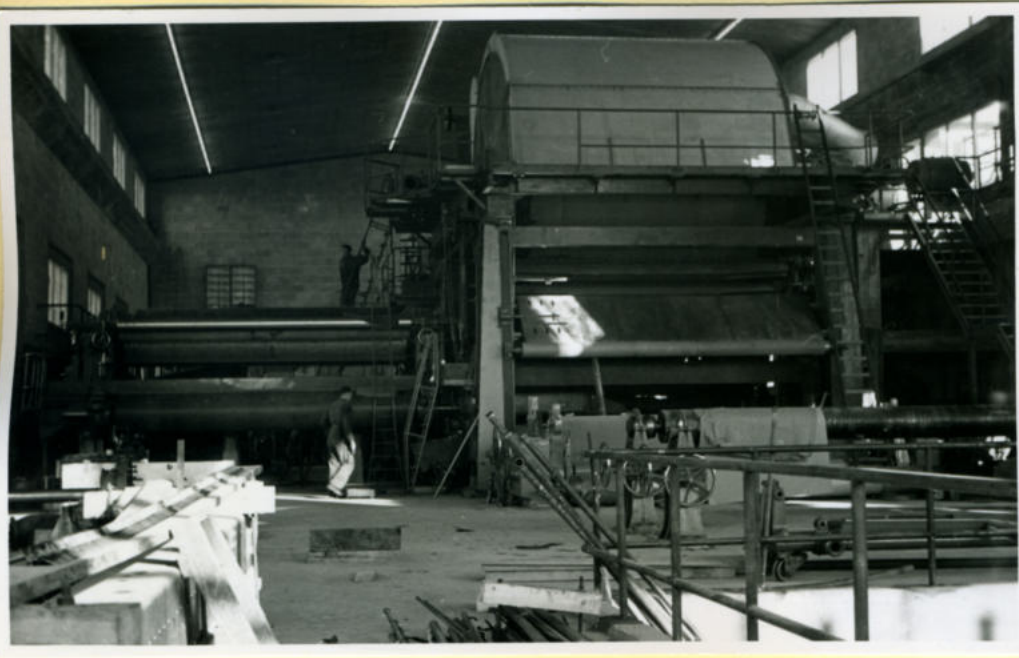


Uitrijdbare registerpartij PM II.

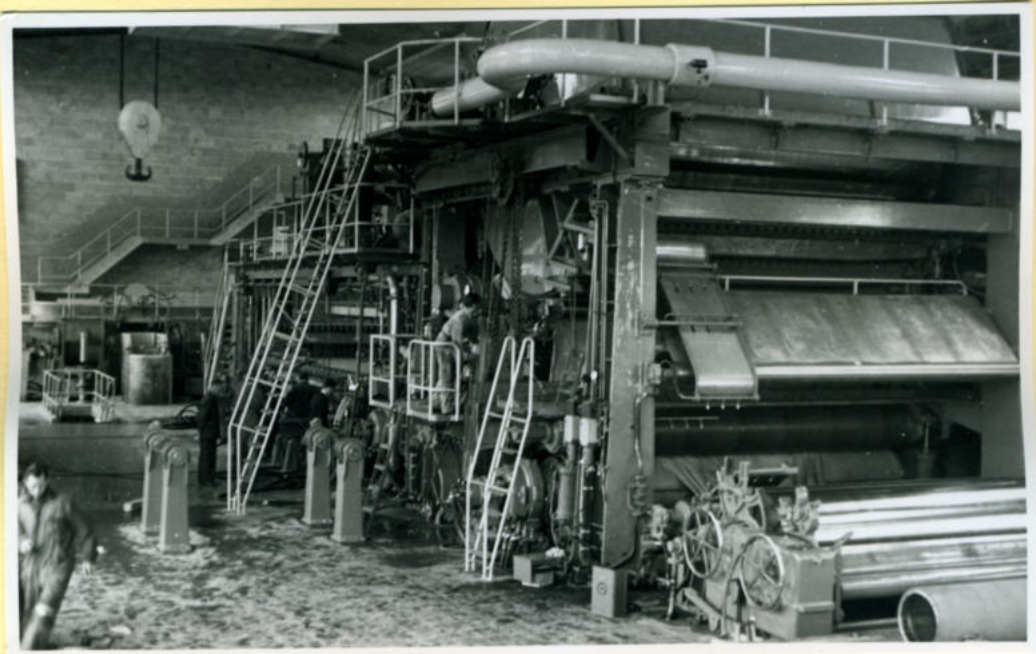


Uitrijdbare gladrollen PM II.

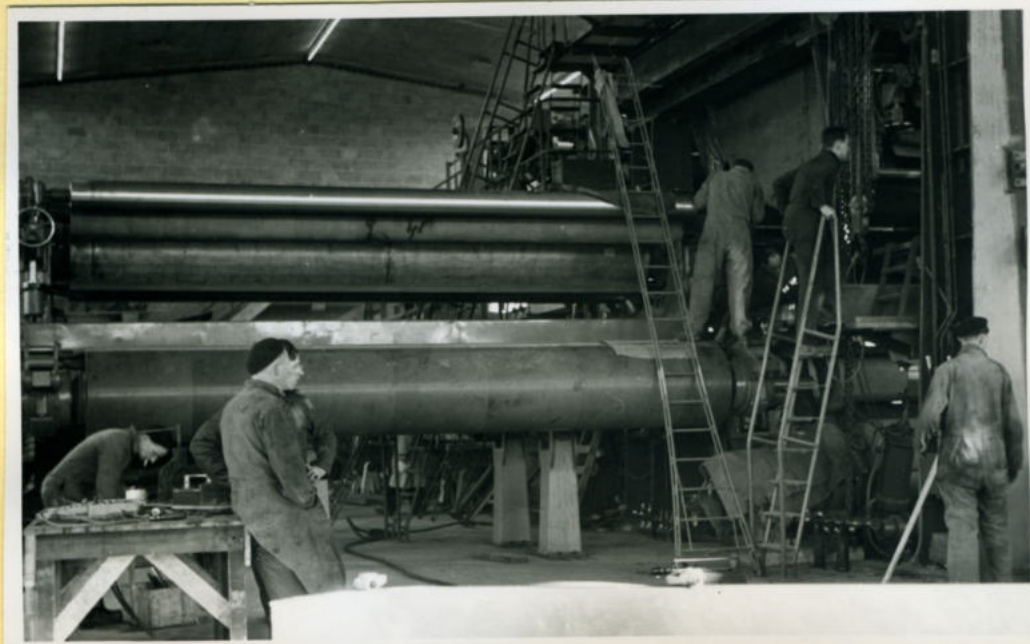
*Boven aan de foto
de glanscylander.*



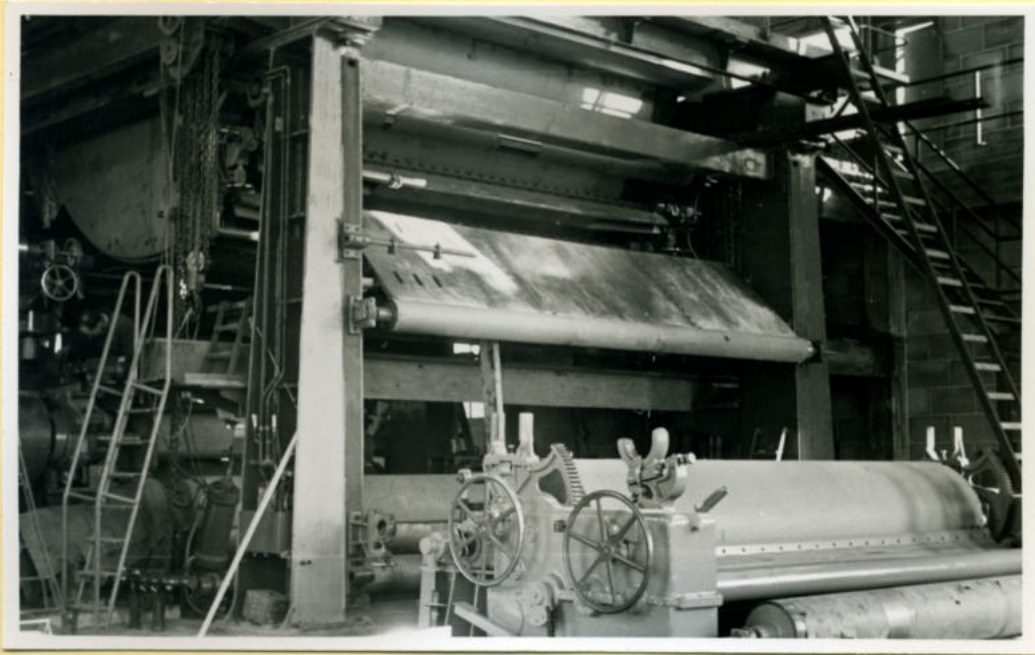
PM II. Van achteren gezien.



PM II. Schuin van achter gezien.



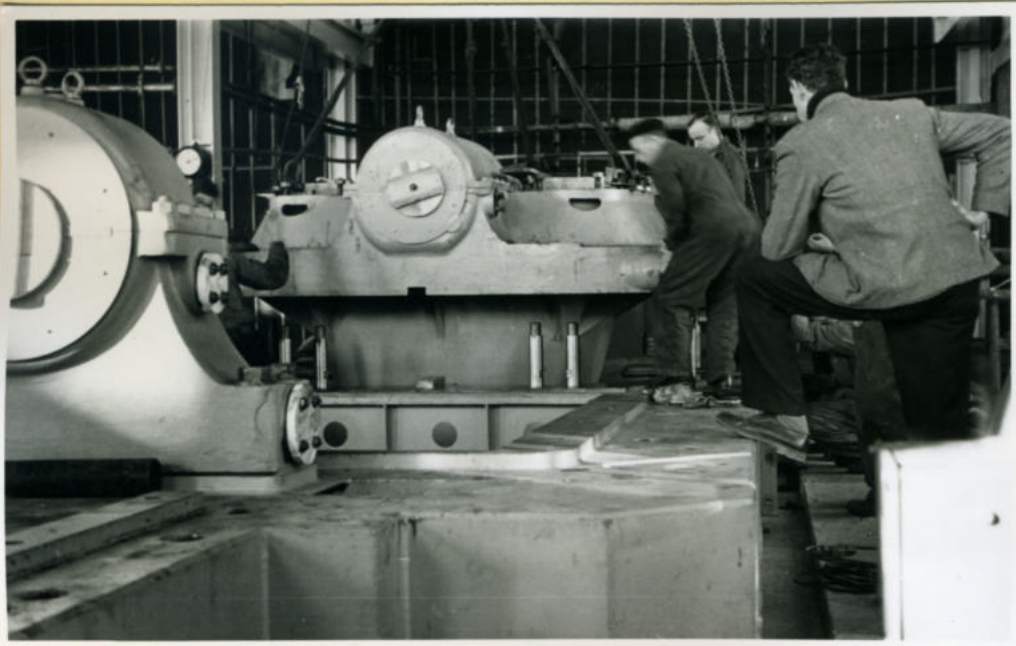
PM II. Uitrijdbare gladrollen.



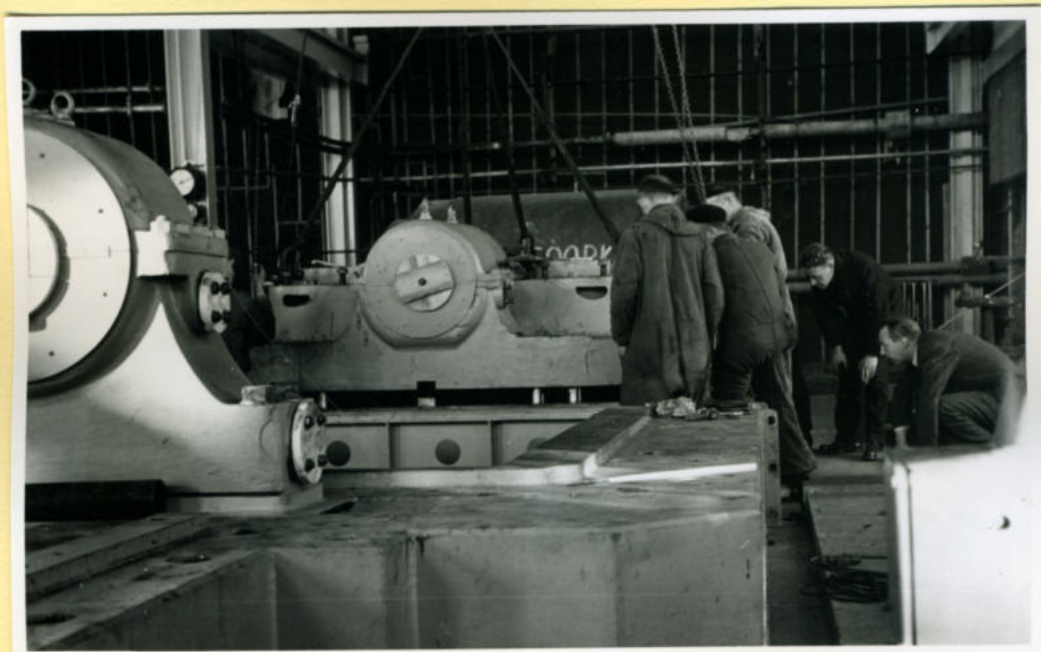
PM II. Opwickelcylinder.



PM II. Lijnaanricht.

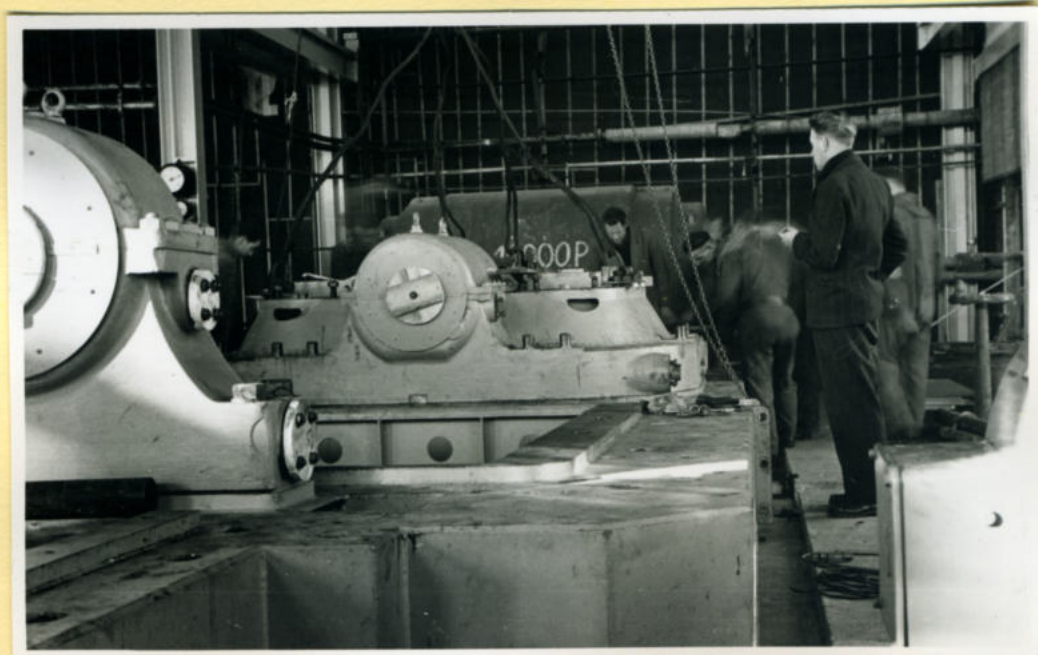


Turbine 4. Montage lagerblokken.

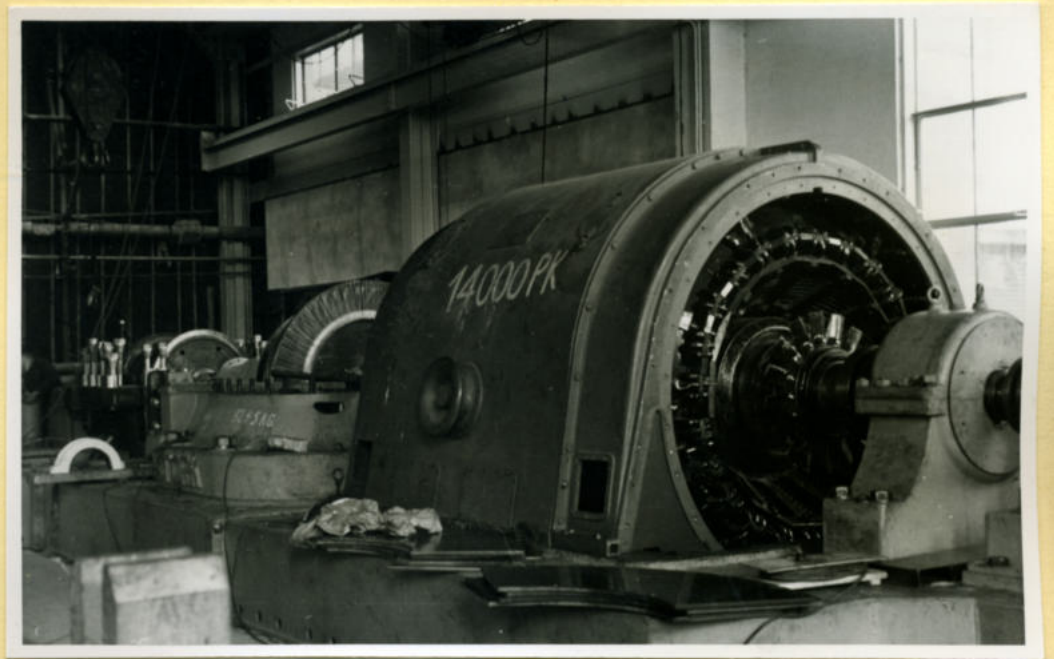


Turbine 4. Montage lagerblokken.

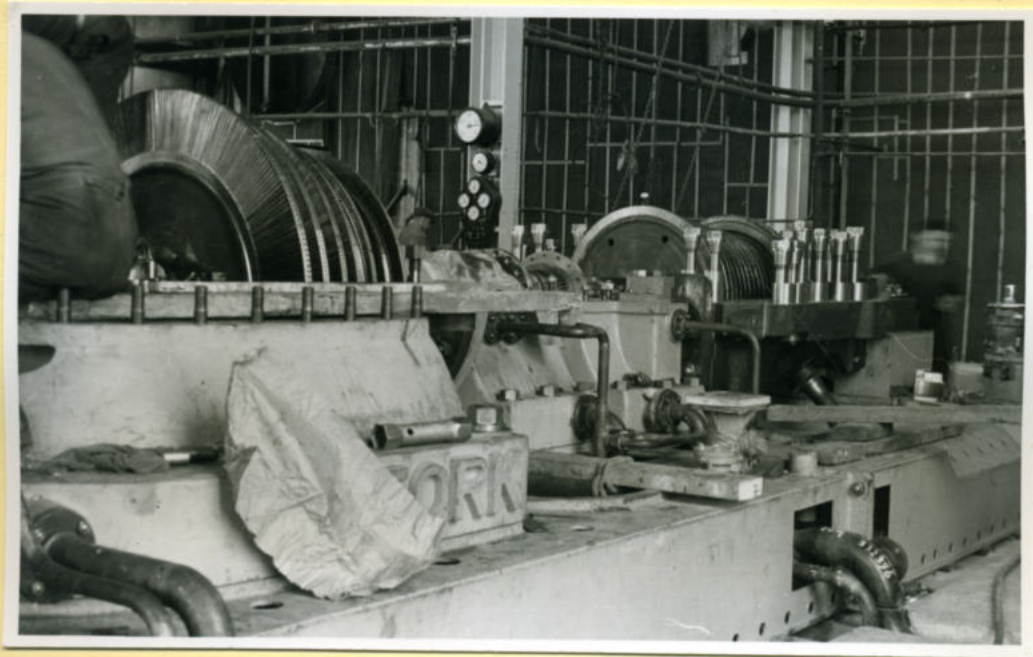
(Rechts Is: Ledder)



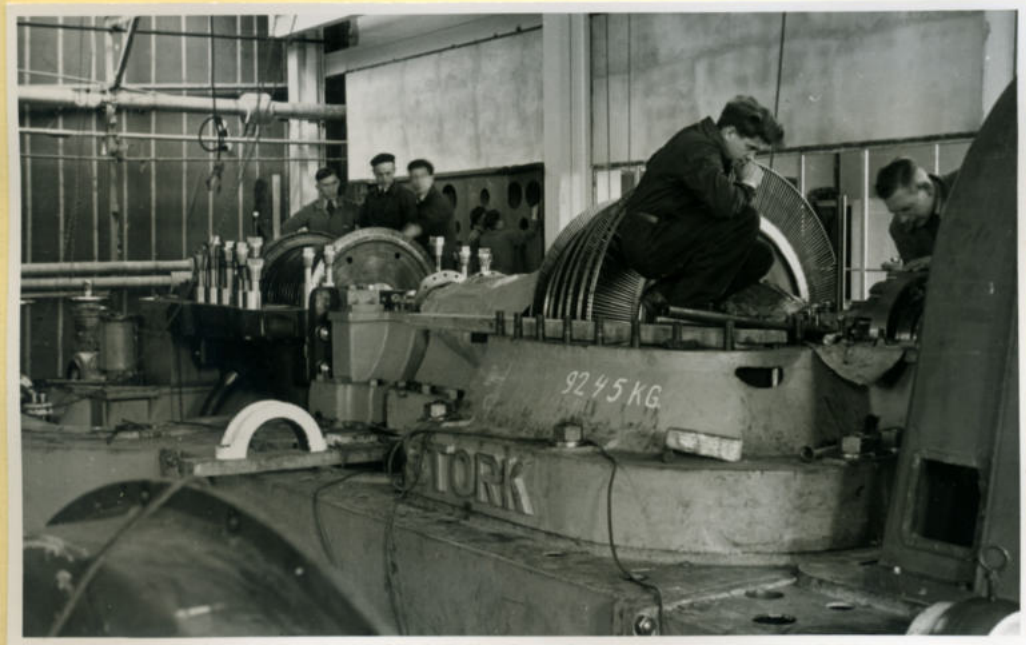
Turbine 4. Montage lagerblokken.



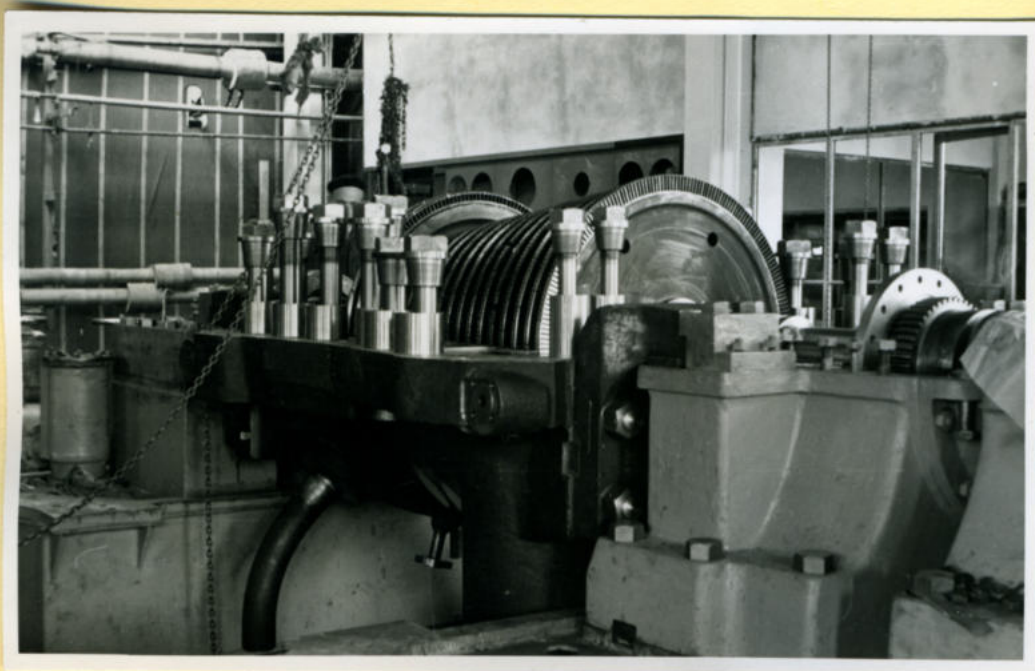
Turbine 4. Generator.



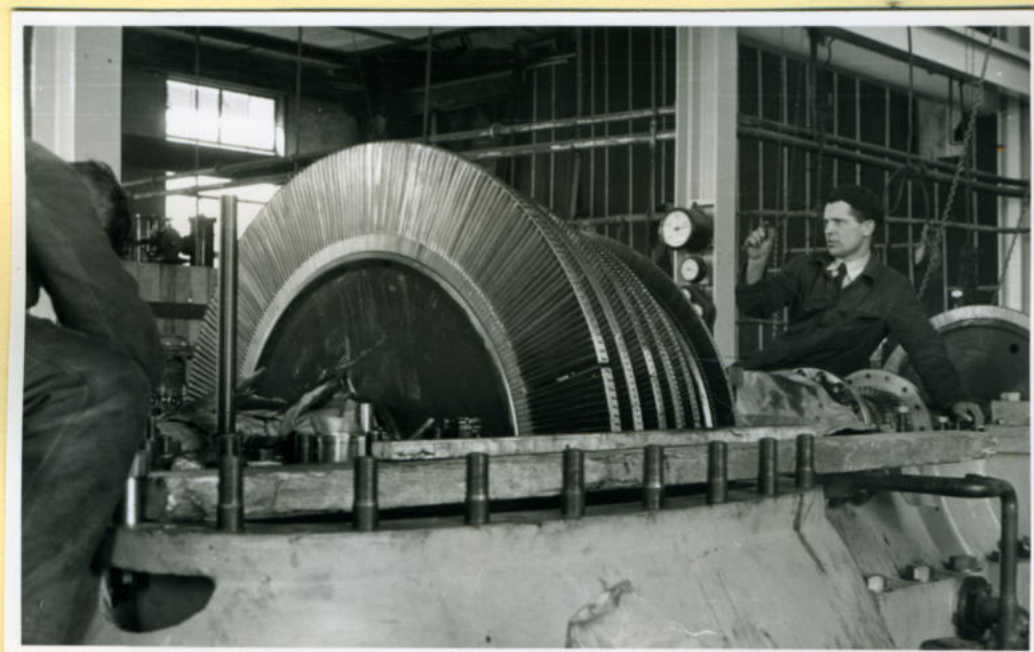
Turbine 4. As met schoepenwielen ingelegd.



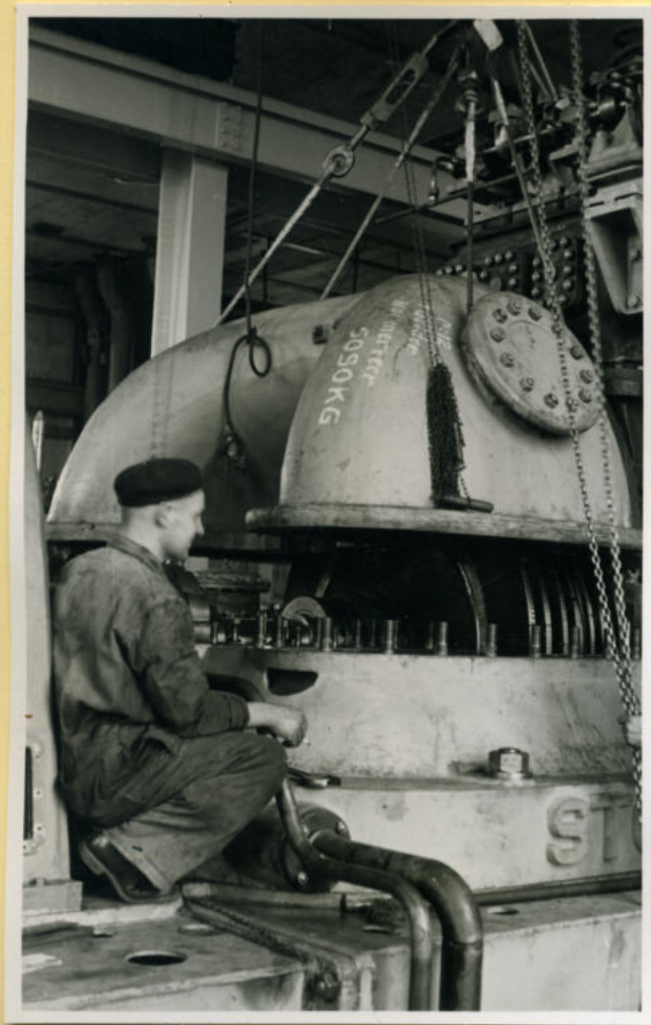
Turbine 4. As wordt afgesteld.



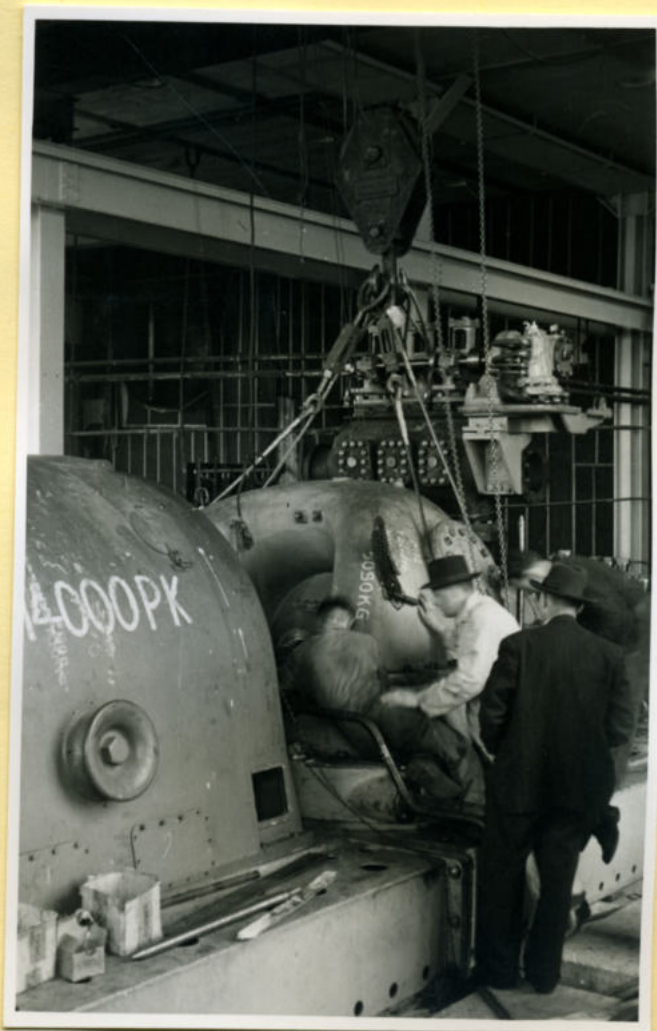
Turbine 4. Hoogedrukgedeelte.



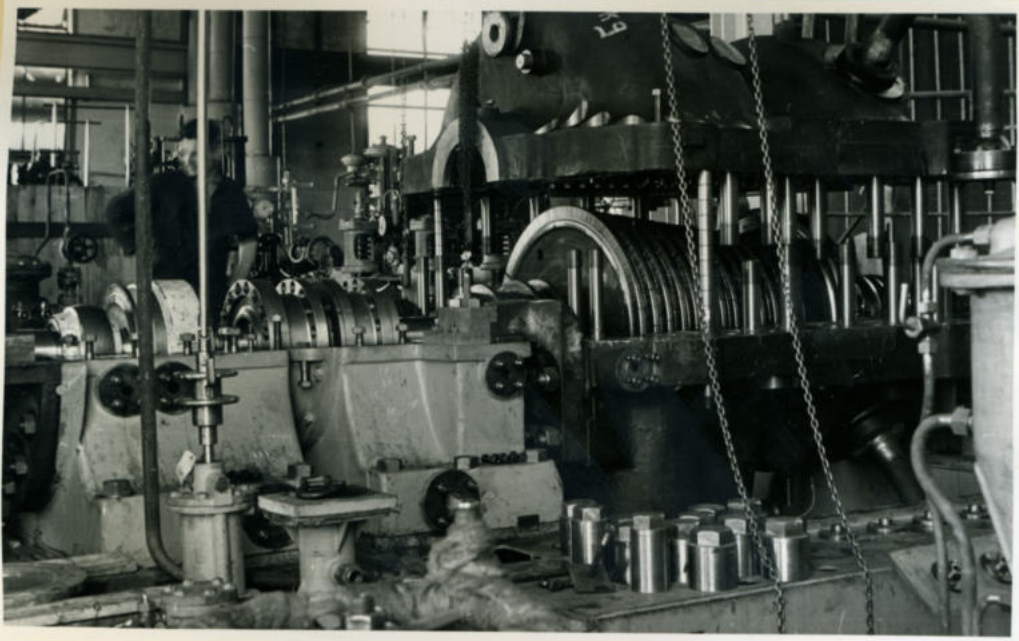
Turbine 4. Lage drukgedeelte.



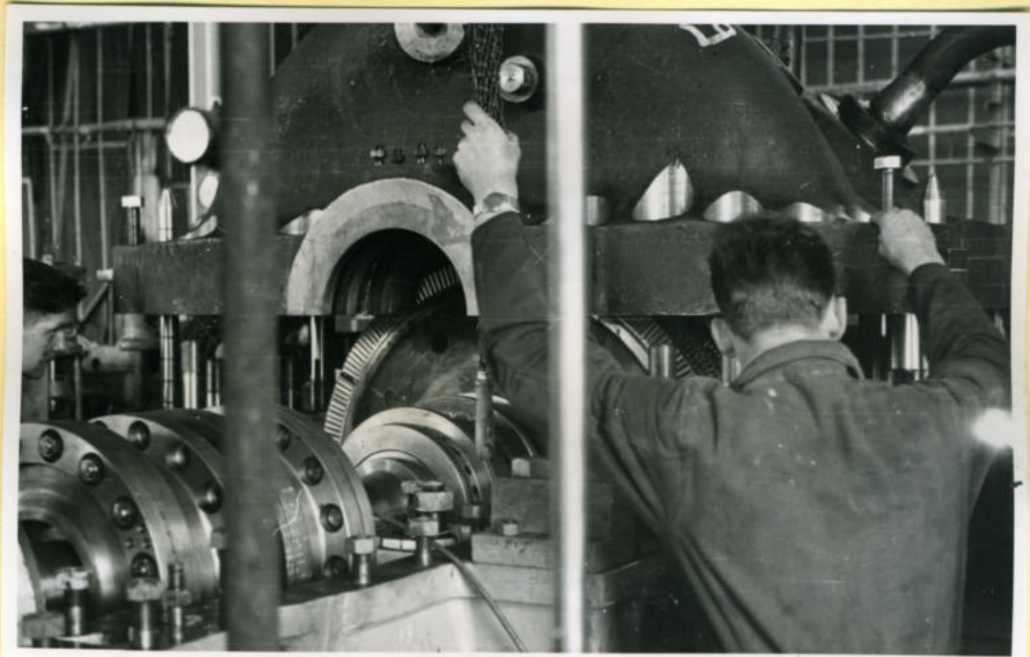
*Turbine 4.
Het plaatsen van de kop
op het lagedrukgedeelte.*



*Turbine 4.
Het plaatsen van de kop
op het lagedrukgedeelte.*

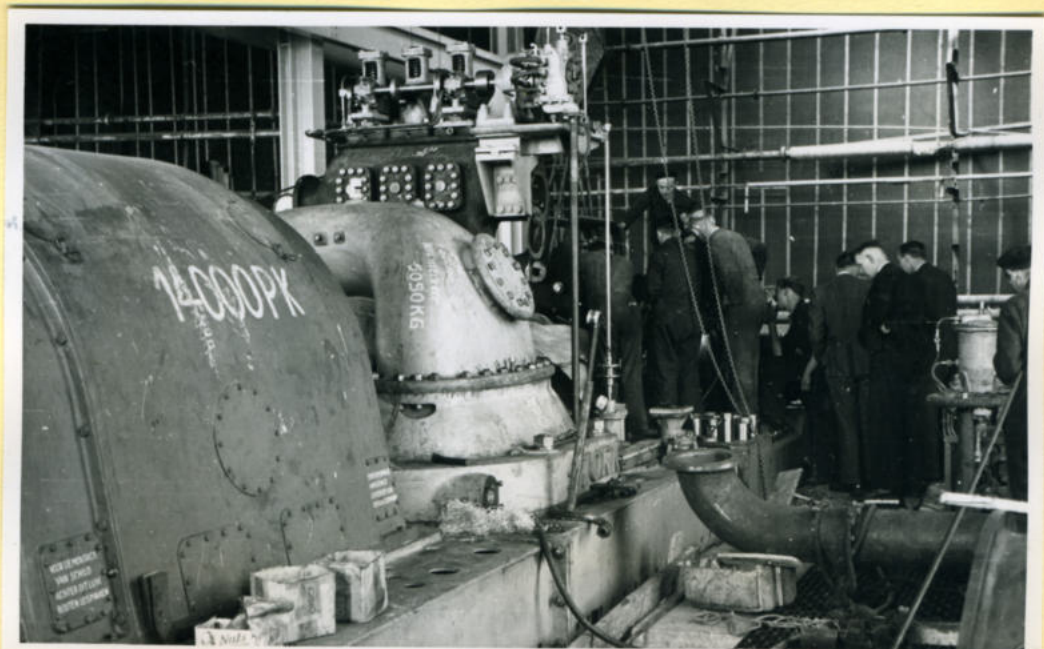


Turbine 4. Hogedrukgedeelte.



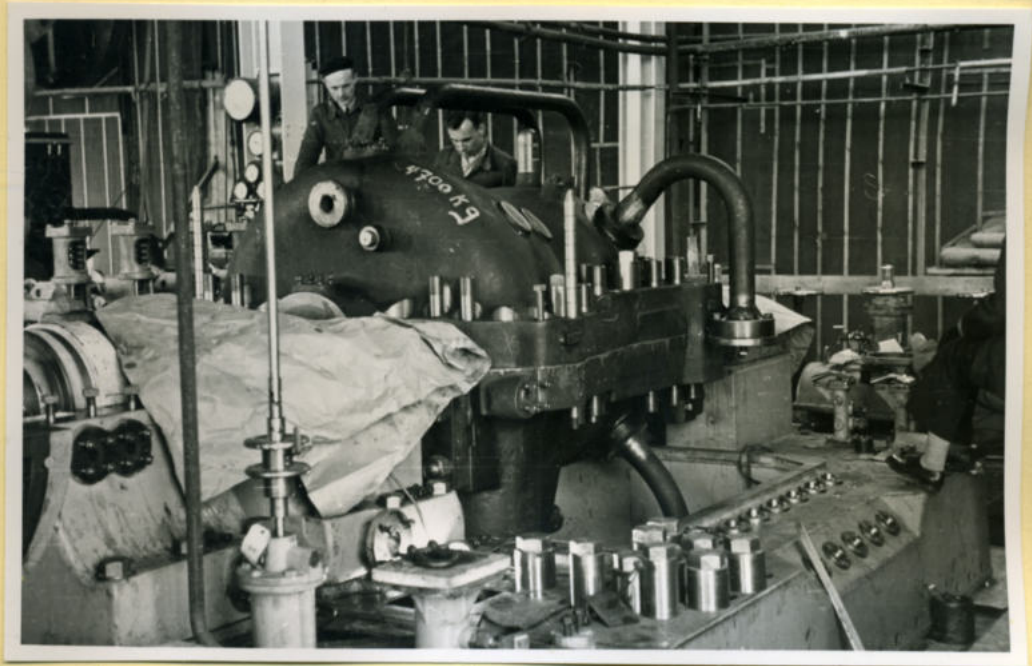
Turbine 4.

Het plaatsen van de kap op het hogedrukgedeelte.



Turbine 4.

Het plaatsen van de kap op het hogedrukgedeelte.



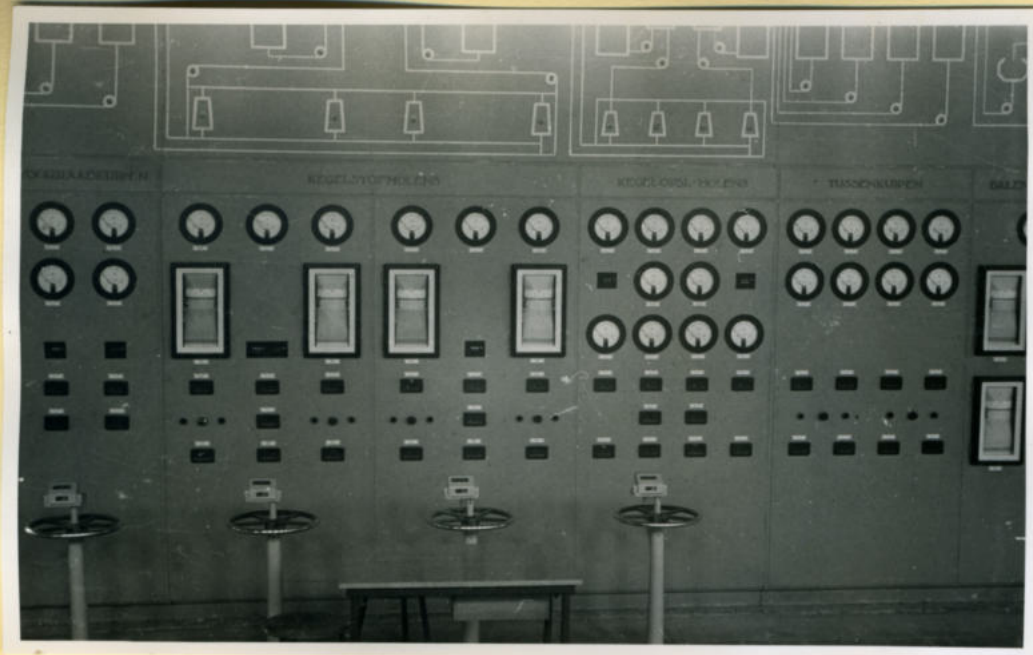
Turbine 4. montage hogedrukgedeelte.



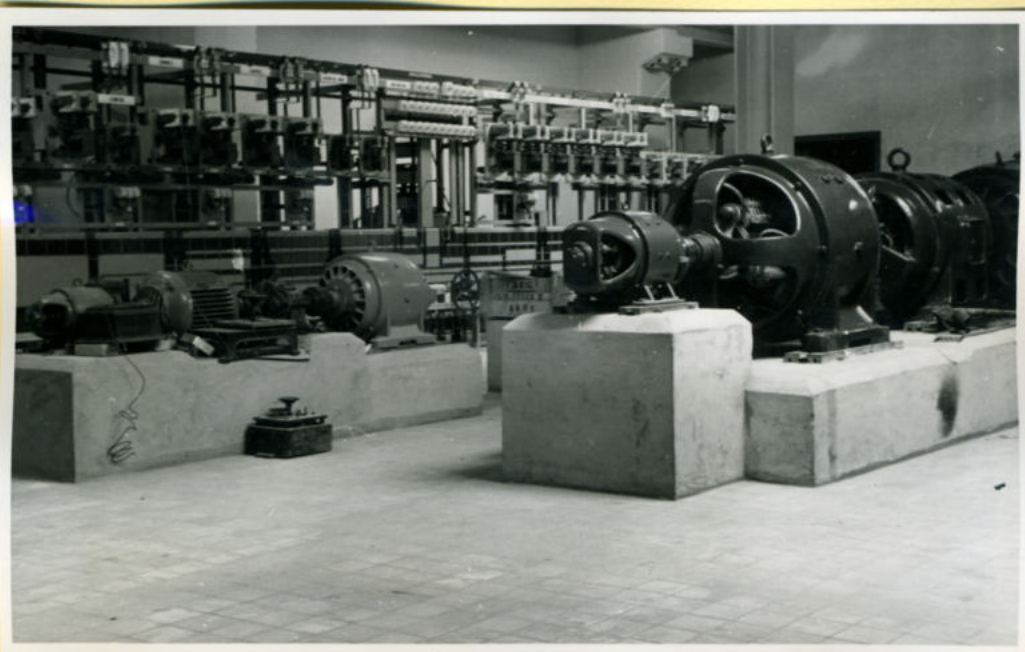
Ketel D. Droogstoken met turf.



Ketel D. Droogstoken met turf. (de vuurhaard).

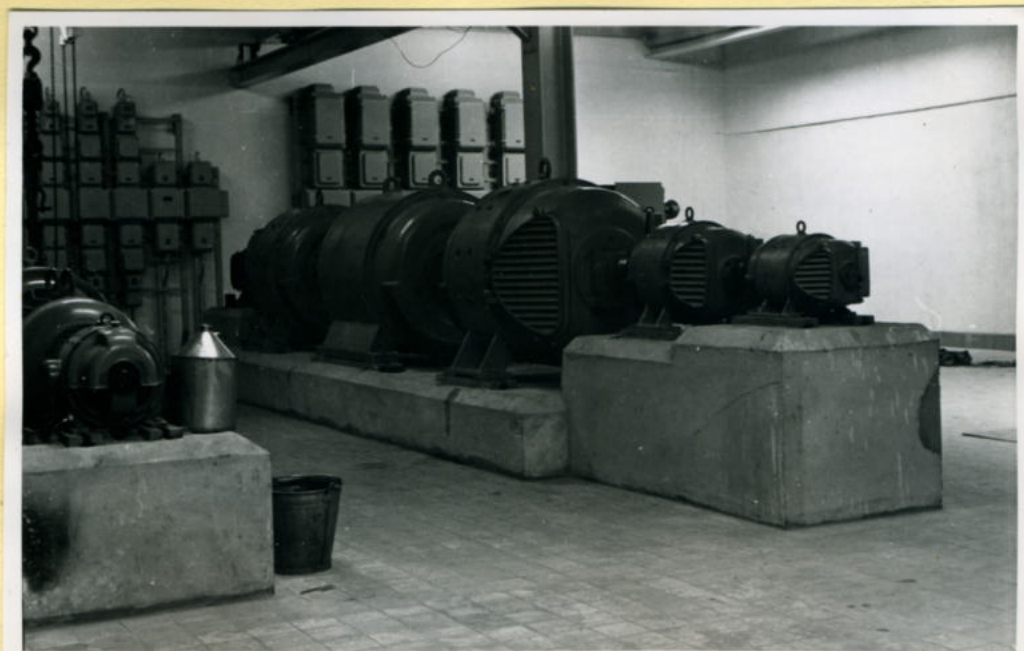


Schakelbord halterij PM 11.



Omvormruimte.

Rechts omvormer PM 2, en links schakelrek PM 11.



Omvormruimte met omvormer PM 11.

